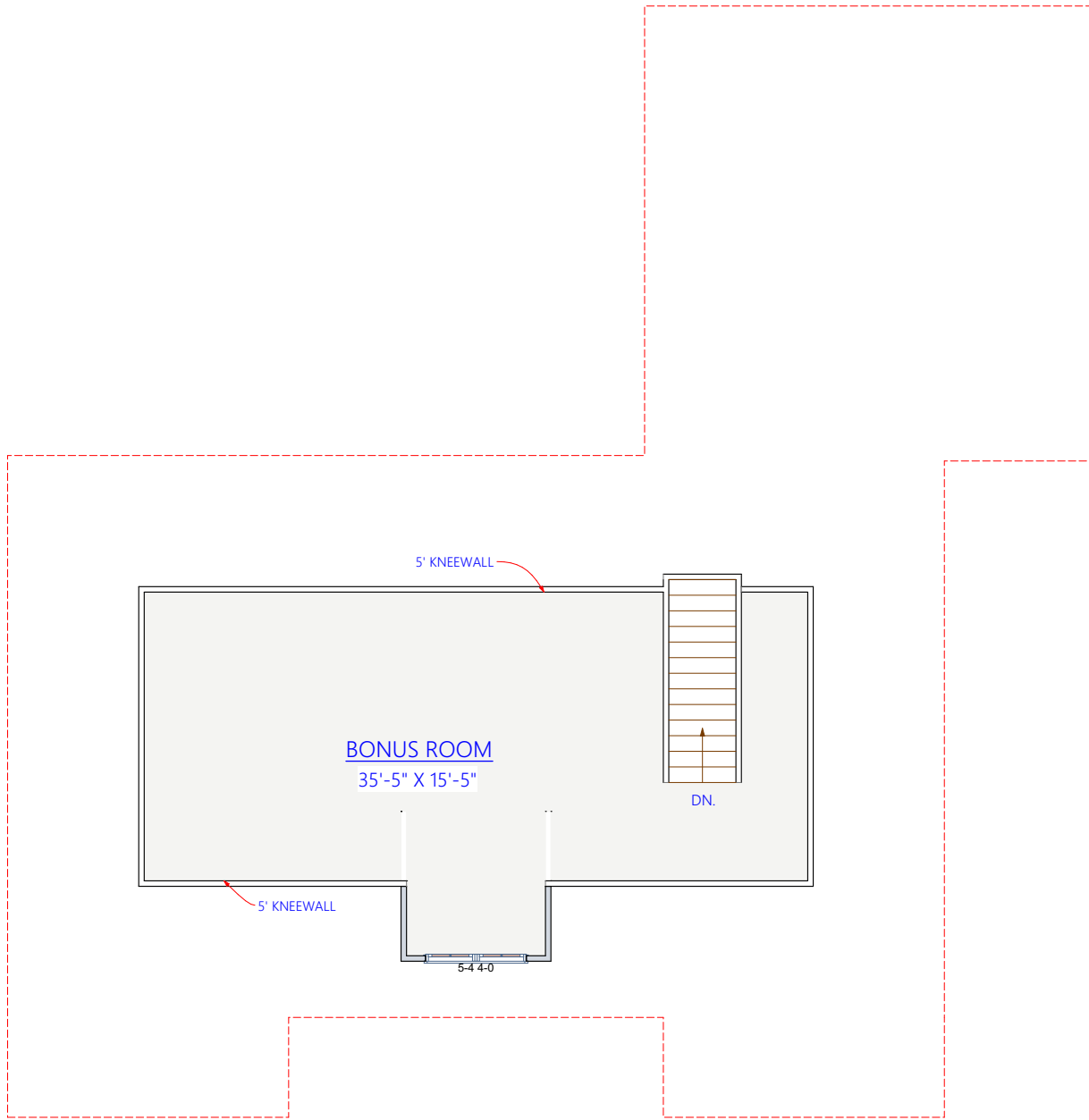


PLAN DESCRIPTION (VD1662)
OVERALL LENGTH: 58' OVERALL DEPTH: 59'-4"
SQUARE FOOTAGE: FIRST FLOOR LIVING AREA = 1,662 SQ. FT. SECOND FLOOR LIVING AREA = 0 TOTAL SQ. FT. LIVING AREA = 1,662 SQ. FT. BONUS ROOM = 530 SQ. FT. GARAGE = 578 SQ. FT. PORCH = 107 SQ. FT. DECK = 120 SQ. FT.
BEDROOMS = 3 BATHS = 2 GARAGE = 2 CAR BONUS ROOM = YES
PRIMARY CEILING HEIGHT: 8'
WALL CONSTRUCTION : 2"X4" FRAME W/ SIDING & BRICK
FOUNDATION TYPE: CRAWL SPACE
PRIMARY ROOF PITCH: 10/12

## FLOOR PLAN

LIVING AREA = 1,662 SQ. FT.  
GARAGE = 578 SQ. FT.



## SECOND FLOOR PLAN

BONUS ROOM = 530 SQ. FT.